

Lincoln High School Band

Concert/Symphonic Band
Chair Placement

Tuba

Audition Materials

BB \flat TUBA
Concert/Symphonic Tubas

$\text{♩} = 80$

First staff of music, bass clef, 2/4 time signature. It contains a sequence of eighth and sixteenth notes. A bracketed section of the staff is labeled with a circled '5'. A dynamic marking 'f' is present at the end of the staff.

Second staff of music, bass clef, 2/4 time signature. It continues the melodic line with various articulations. A dynamic marking 'p' is centered below the staff.

Third staff of music, bass clef, 2/4 time signature. It features a series of eighth notes. A circled section of the staff is labeled with 'RL' and 'f'.

Fourth staff of music, bass clef, 2/4 time signature. It begins with a circled '6' and a dynamic marking 'mf'.

Fifth staff of music, bass clef, 2/4 time signature. It starts with a dynamic marking 'f' and ends with a dynamic marking 'p'.

Sixth staff of music, bass clef, 2/4 time signature. A circled section of the staff is labeled with 'RLR' and 'mf'.

Seventh staff of music, bass clef, 2/4 time signature. It begins with a circled '7' and a dynamic marking 'f'.

Eighth staff of music, bass clef, 2/4 time signature. It starts with a dynamic marking 'mp'.

Ninth staff of music, bass clef, 2/4 time signature. It features a dynamic marking 'ff'.

Tenth staff of music, bass clef, 2/4 time signature. It ends with a dynamic marking 'f'.

SD All State Band Auditions

Revised 2008

Bass Trombone Chromatic Scale

To be played from memory at a minimum tempo of $\text{♩} = 76$.

Two staves of musical notation for the Bass Trombone Chromatic Scale. The first staff shows the ascending scale from B \flat to B \sharp in 8/8 time. The second staff shows the descending scale from B \sharp to B \flat . The notes are: B \flat , B \natural , B \sharp , C \flat , C \natural , C \sharp , D \flat , D \natural , D \sharp , E \flat , E \natural , E \sharp , F \flat , F \natural , F \sharp , G \flat , G \natural , G \sharp , A \flat , A \natural , A \sharp , B \flat , B \natural , B \sharp .

Euphonium BC Chromatic Scale

To be played from memory at a minimum tempo of $\text{♩} = 76$.

Two staves of musical notation for the Euphonium BC Chromatic Scale. The first staff shows the ascending scale from B \flat to B \sharp in 8/8 time. The second staff shows the descending scale from B \sharp to B \flat . The notes are: B \flat , B \natural , B \sharp , C \flat , C \natural , C \sharp , D \flat , D \natural , D \sharp , E \flat , E \natural , E \sharp , F \flat , F \natural , F \sharp , G \flat , G \natural , G \sharp , A \flat , A \natural , A \sharp , B \flat , B \natural , B \sharp .

Tuba Chromatic Scale

To be played from memory at a minimum tempo of $\text{♩} = 76$.

Two staves of musical notation for the Tuba Chromatic Scale. The first staff shows the ascending scale from B \flat to B \sharp in 8/8 time. The second staff shows the descending scale from B \sharp to B \flat . The notes are: B \flat , B \natural , B \sharp , C \flat , C \natural , C \sharp , D \flat , D \natural , D \sharp , E \flat , E \natural , E \sharp , F \flat , F \natural , F \sharp , G \flat , G \natural , G \sharp , A \flat , A \natural , A \sharp , B \flat , B \natural , B \sharp .

Mallet Chromatic Scale

To be played from memory at a minimum tempo of $\text{♩} = 112$.

Two staves of musical notation for the Mallet Chromatic Scale. The first staff shows the ascending scale from B \flat to B \sharp in 8/8 time. The second staff shows the descending scale from B \sharp to B \flat . The notes are: B \flat , B \natural , B \sharp , C \flat , C \natural , C \sharp , D \flat , D \natural , D \sharp , E \flat , E \natural , E \sharp , F \flat , F \natural , F \sharp , G \flat , G \natural , G \sharp , A \flat , A \natural , A \sharp , B \flat , B \natural , B \sharp .

South Dakota All-State Band Auditions

Tuba Major and minor scales

Revised July 2008

To be played at a minimum tempo of ♩ = 144

C Major



a melodic minor



F Major



d melodic minor



G Major



e melodic minor



Bb Major



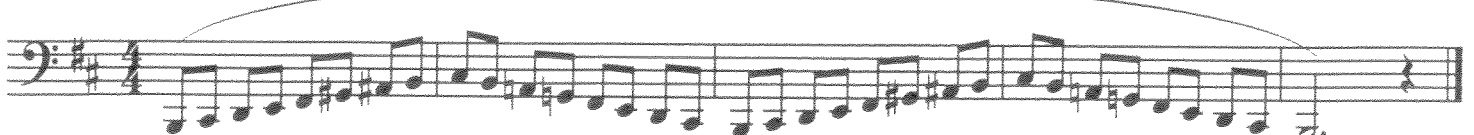
g melodic minor



D Major



b melodic minor



South Dakota All-State Band Auditions

Tuba Major and minor scales

Revised July 2008

To be played at a minimum tempo of ♩ = 144

E^b Major



c melodic minor



A^b Major



f melodic minor



D^b Major



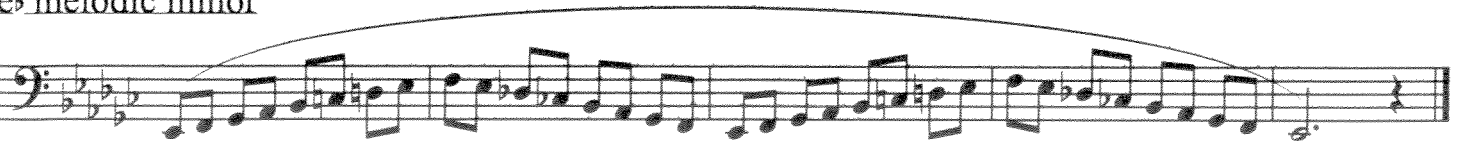
b^b melodic minor



G^b Major



e^b melodic minor



All-State Band and Orchestra Terminology Sheet

(Revised – June 2008 & June 2009 - Definitions taken from the Oxford Dictionary of Music)

*NOTE: Anyone auditioning for the Orchestra will include the bowing terms in the shaded box at the end;
Students auditioning for the All-State Band test will not include the bowing terms

1. *accelerando* (*accel.*) - gradually growing faster
2. *accidental* - chromatic alteration of a note from the key signature until the next bar line (can be extended by a tie)
3. *ad libitum* (*ad lib*) or *a piacere* - at pleasure, at will
4. *a due* (*a 2*) - for two parts
5. *affettuoso* - tenderly, with feeling
6. *alla breve* (♩) - 2/2 time, cut time
7. *allargando* - getting slower and louder
8. *amoroso* - with love, with warm feeling
9. *animato* or *con anima* - lively, animated, spirited
10. *appassionato* or *passione* - passionate, fervent
11. *assai* - much, very
12. *a tempo* - return to the original tempo
13. *attacca* - continue without a pause
14. *bravura* - great technical skill, virtuosity
15. *brillante* - sparkling, spirited
16. *cadenza* - a brilliant (often highly technical) solo, often found at the end of a movement or a piece
17. *cadence* - the close of a melodic or harmonic phrase
18. *calmando* or *calmato* - quieting down, subsiding
19. *cantando* or *cantabile* - in a singing style, lyrical
20. *capriccioso* - fanciful, freely
21. *coda* - a concluding passage added to the form proper
22. *con* - with
23. *con brio* - with vigor, vigorously
24. *con forza* - with force, strength
25. *con fuoco* - with fire, passionately
26. *con sordino* - with mute
27. *con spirito* or *spiritoso* - with spirit
28. *crescendo* - becoming louder
29. *da capo* (*D.C.*) - from the beginning
30. *dal segno* (*D.S.*) - from the sign (♯)
31. *decrescendo* (*decresc.*) - becoming softer
32. *diatonic* - notes within a given scale or key
33. *diminuendo* (*dim.*) - becoming softer
34. *divisi* - divided parts where there is normally one
35. *dolce* - sweet, gentle
36. *doppio movimento* - twice as fast
37. *double flat* (♭♭) - lower by one full step
38. *double sharp* (♯♯) - raise by one full step
39. *dynamics* - the level of loudness
 - ... *pianississimo* - (*ppp*) - very, very soft
 - ... *pianissimo* - (*pp*) - very soft
 - ... *piano* - (*p*) - soft
 - ... *mezzo piano* - (*mp*) - medium soft
 - ... *mezzo forte* - (*mf*) - medium loud
 - ... *forte* - (*f*) - loud
 - ... *fortissimo* - (*ff*) - very loud
 - ... *fortississimo* - (*fff*) - very, very loud
40. *e, ed* or *et* - and
41. *espressivo* - with feeling, with expression
42. *etude* - a study or exercise focusing on a particular technical or musical problem
43. *fermata* - a pause or hold (◡)
44. *finale* - last movement of a multi-movement work
45. *fine* - the end
46. *forzando* - a strong accent
47. *giocoso* - humorous, playful
48. *giusto* - exact, appropriate or usual tempo
49. *glissando* - a glide from one note to the next
50. *grazioso* - graceful
51. *interval* - pitch difference between two notes
52. *key signature* - sharps or flats placed at the beginning of a selection indicating its key
53. *largamente* - broadly
54. *legato* - smooth, even, without breaks between notes
55. *l'istesso tempo* - at the same tempo
56. *loco* - return to normal position
57. *maestoso* - majestic, with dignity
58. *marcato* - accented, stressed
59. *marcia* - march
60. *meno* - less
61. *molto* - much, very
62. *morendo* - fading away
63. *mosso* or *moto* - moved, motion
64. *non* - no, do not
65. *nuance* - subtle shading in style
66. *ossia* - an alternate version
67. *pesante* - weighty, ponderous
68. *piu* - more
69. *pochissimo* - as little as possible
70. *poco a poco* - little by little
71. *pomposo* - stately, pompous
72. *quasi* - almost, as if
73. *rallentando* (*rall.*) - becoming slower
74. *ritardando* (*ritard.* or *rit.*) - becoming slower
75. *ritenuto* (*riten.*) - immediately slower
76. *rinforzando* (*rfz.*) - a sudden accent
77. *rubato* - free use of *accel.* and *rit.* within a measure without altering the duration of the measure as a whole
78. *sans* or *senza* - without
79. *scherzando* - playfully
80. *segue* - continue without pausing
81. *sempre* - always, throughout
82. *sforzando* (*sfz.*) - a sudden accent
83. *simile* - in the same manner
84. *sol* - a section solo, a group of soloists
85. *solo* - a part for one performer
86. *sonore* - resounding, loud
87. *sordino* - mute
88. *sostenuto* (*sost.*) - sustained

89. *staccato* – detached
 90. *stringendo* (*string.*) – growing faster
 91. *subito* (*sub.*) – suddenly, at once
 92. *tacet* – be silent
 93. *tempo* – rate of speed
 ... *grave* – solemn and very, very slow
 ... *largo* – very slow
 ... *adagio, lento, larghetto* – slow
 ... *andante* – moderately slow
 ... *andantino* – slightly faster than *andante*
 ... *moderato* – moderate, neither fast nor slow
 ... *allegretto* – moderately fast
 ... *allegro* – fast and lively
 ... *vivo, vivace* – very fast and intense
 ... *presto* – the fastest conventional tempo
 ... *prestissimo* – as fast as possible
 94. *tenuto* (*ten.*) – held, sustained for full value
 95. *timbre* – tone color
 96. *tranquillo* – quiet, peaceful
 97. *trill* (*tr.*) – a rapid alteration between the written note and the diatonic second above it
 98. *troppo* – too much
 99. *tutti* – all, with all performers
 100. *un, una, uno* – one
 101. *unison* – together on the same part or in octaves

~~~~~SCALES~~~~~

**Major Scales** are diatonic scales with half-steps between 3 -4 and 7 - 8.

**Natural Minor Scales** are diatonic scales with half-steps between 2 -3 and 5 -6

**Harmonic Minor Scales** are natural minor scales with the 7<sup>th</sup> scale degree raised a half-step. This adds a half-step between 7 - 8, and an interval of 1 ½ steps between 6 - 7.

**Melodic Minor Scales** are natural scales where the 6<sup>th</sup> and 7<sup>th</sup> scale degrees are raised one half step in the ascending form creating half steps between 2 - 3 and 7 - 8. These notes are lowered to their natural state in the descending scale, making it identical to the natural minor.

**Chromatic Scales** are scales which proceed by half-step from the first note to the last note.



~~~~~KEY SIGNATURES~~~~~

C Major – no sharps or flats
a minor – no sharps or flats

| Flat Keys | |
|-----------|--------|
| Majors | Minors |
| 1 – F | 1 – D |
| 2 – Bb | 2 – G |
| 3 – Eb | 3 – C |
| 4 – Ab | 4 – F |
| 5 – Db | 5 – Bb |
| 6 – Gb | 6 – Eb |
| 7 – Cb | 7 – Ab |

| Sharp Keys | |
|------------|---------|
| Majors | Minors |
| 1 – G | 1 – e |
| 2 – D | 2 – b |
| 3 – A | 3 – f # |
| 4 – E | 4 – c # |
| 5 – B | 5 – g # |
| 6 – F # | 6 – d # |
| 7 – C # | 7 – a # |

~~~~~BOWING TERMS~~~~~ \* ( for anyone auditioning for All-State Orchestra, winds, percussion and strings )

- |                                                                                           |                                                                                                                                                                                                             |
|-------------------------------------------------------------------------------------------|-------------------------------------------------------------------------------------------------------------------------------------------------------------------------------------------------------------|
| A. <b>up bow</b> – V – moving tip to frog                                                 | L. <b>staccato volant</b> – linked <i>spiccato</i> notes in the same direction                                                                                                                              |
| B. <b>down bow</b> – II – moving frog to tip                                              | M. <b>ricochet</b> – thrown/rebound stroke usually in groups of 2 or 3                                                                                                                                      |
| C. <b>détaché</b> – a primarily connected bow stroke with distinct, separate bows         | N. <b>flautando</b> – flute-like bowing played near the fingerboard                                                                                                                                         |
| D. <b>slur</b> – connecting more than one note per bow without stopping                   | O. <b>col legno</b> – the effect produced by striking the string with the stick                                                                                                                             |
| E. <b>staccato</b> – short, stopped strokes with the bow remaining on the string          | P. <b>sul ponticello</b> – an icy, whistling effect produced by purposely playing too close to the bridge                                                                                                   |
| F. <b>spiccato</b> – stroke with the bow bouncing off the string                          | Q. <b>alto clef</b> – used for viola and trombone to avoid excessive ledger lines: middle C is the center line         |
| G. <b>portato</b> – slightly enunciate each note within a slur using bow weight and speed | R. <b>tenor clef</b> – used for cello, trombone, bassoon and double bass: middle C is the fourth line from the bottom  |
| H. <b>arco</b> – with the bow                                                             | S. <b>vibrato</b> – slight variation of pitch by left hand motion used to add warmth                                                                                                                        |
| I. <b>pizzicato</b> – plucked                                                             | T. What is the name of this year's All-State Orchestra Conductor?                                                                                                                                           |
| J. <b>martelé</b> – hammered; heavily accented <i>staccato</i>                            | U. What are the names of the composers and pieces on this year's ASO concert                                                                                                                                |
| K. <b>tremolo</b> – an effect produced by rapidly alternating down and up bows            |                                                                                                                                                                                                             |